



Stratford **PARK**

NEWSLETTER - NOV 2023

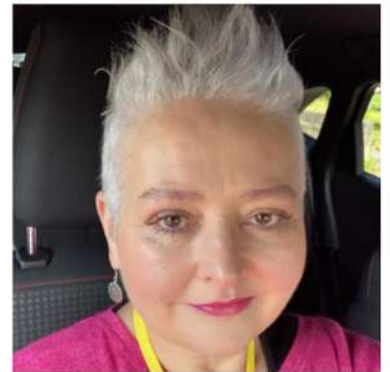
It's hard to believe that Christmas is just around the corner and summer will be upon us. The whole A&P team are frantically working on their show - the biggest Agricultural and Pastoral show in Taranaki.

For those of us who have lived here for many years, heading along to the showgrounds brings a lot of fantastic memories. From watching children's faces light up when having a cuddle with a rabbit at Old McDonald Farm or trying to coax your parents to let you go on one of those scary rides and then having a go at being the fastest draw in Taranaki, shooting metal ducks to win a stuffed animal. Show weekend is exciting and this show is bound to create loads of wonderful memories for years to come.

We'll have a site again this year at the show, so make sure you come and see us and find out exactly what we've been doing. Plus, we'll have some amazing cars on display, and info about what's going on with equestrian and where we are to date.

In September, I came on board in the role of Project/Business Development Manager.

Coming from a career in broadcasting, communications, marketing and event management, I'm really enjoying getting to know everyone and learning about the many different aspects of the project. What an opportunity we have here for Stratford and the wider Taranaki region.



If you've got an event on at Stratford Park or are considering running one, get in touch with me and I'll be sure to put you on to the right person to assist you, plus we'll also promote your event to our database and social media following.

Speaking of Social Media if you haven't followed our various pages yet, make sure to follow the links below - give us a like. All our SM Pages will be updated frequently and its a great place to find out what's happening.

FIND US ON FACEBOOK



<https://www.facebook.com/StratfordPark.Taranaki>
<https://www.facebook.com/profile.php?id=100089813875840>
<https://www.facebook.com/StratfordParkEquestrianComplexNZ>



Check out our new sub brand logos that are being rolled out. Aren't they great?
We've had some new marketing collateral created recently - so we're sure looking the part.





Stratford **PARK**

What we've achieved

- Private Plan Change preparation activities progressing well
- Sub-branding completed
- Cultural Impact Assessment to begin
- Stratford Park Noise Modelling underway
- Ecology Survey completed
- Stage 1 Geotech Assessment received
- Environmental Management Plan in progress
- Traffic Impact Assessment underway
- Tenders received for Equestrian Arenas
- Stratford Park Charitable Status achieved
- Roll out & implementation of Funding Strategy with sub committees about to commence

Gravel Sprint Antics

In October, we held our first Motorsport NZ Sanctioned event - our Gravel Sprint.

Special thanks must go to the South Taranaki Car Club & Taranaki Car Club for enabling us to run this event.

Loads of fun was had and word on the street was that local identity Helen Cameron may have got a little creative on some of the twists and turns and was off to keep a local panel beater in business!



Ripping it up

A few weeks ago, the A&P ran a Flat Track Fundraiser for Motorcross.

With two areas set up for adults & kids, the rain the night before made for some thrills and spills and thanks must go to the friendly tractor driver who came to the rescue of several vehicles.





Stratford **PARK**

MOTORSPORT COMPLEX StratfordPARK

Max Pennington's **AutoCity** #1

MOTOREEST & SWAP MEET
20 APRIL 2024
STRATFORD A&P SHOWGROUNDS

SAVE THE DATE

The Max Pennington AutoCity MotorFest returns in 2024 at the Stratford Park A&P Showgrounds.

Make sure you register your club or your car, or you might like to take part in the swap meet!

Featuring great trade exhibits, to a range of food options, live music and entertainment for the whole family - mark the date in your calendars now!

QEII Fencing to protect native Kahikatea Trees

Stratford Park is excited to offer this supporter package for one of the first stages of this entirely unique facility being developed in Stratford and under the watchful eye of Te Maunga Taranaki.

On the land footprint that is currently earmarked for the Stratford Park Equestrian site, there is a group of established native Kahikatea Trees, that have been identified as regionally significant by the Taranaki Regional Council and the QEII Trust.

The trees are located on a flat part of the equestrian site and are currently not fenced or protected.

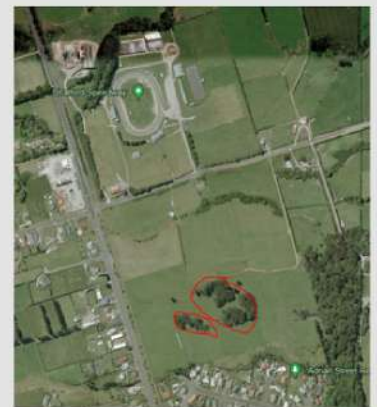
We aim to deliver an experience in such a way that locals and visitors are inspired and exhilarated by the unique welcome of Stratford Park, Te Maunga, the local Taranaki community and its people.

All stakeholders in the Stratford Park Equestrian project have agreed to put a QEII Trust protection around the Kahikatea trees.

To do so, we need to build a secure fence around this site at cost of close to \$18k. We have secured some funding through the QEII Trust and the Taranaki Regional Council and now are seeking support from the corporate sector assist us in getting this vital work underway.

Your support will enable these trees to stand protected with the over 600 native trees we have already planted and the next 600-800 planned to go in the ground in the next two years.

If you believe this may be something you might like to support, please reach out to our Project /Business Development Manager, Tracey on 027 305 6467 or contact her by email at projectmanager@stratfordpark.co.nz



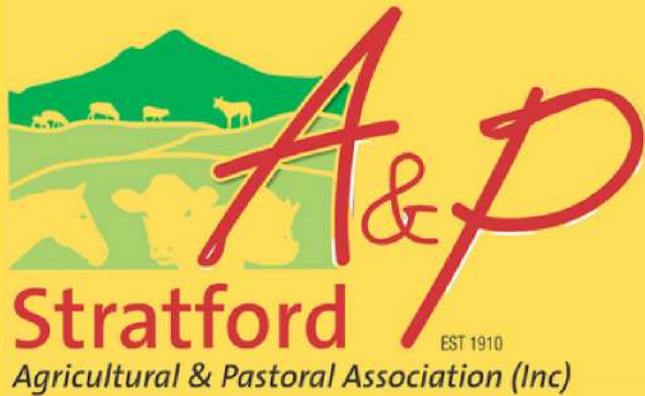


Stratford **PARK**

GIDDY UP

Horse people know all too well the challenges we face with wanting to take your horses out - but you don't want to travel for miles to get there - well, we have the solution right here at Stratford Park.

Get in contact with the Stratford Park Equestrian Complex page on FB for more details.



SHOW

SAT 25 & SUN 26
NOVEMBER

**HOME INDUSTRIES
LIVESTOCK
KIDZONE
OLD MCDONALD FARM
KIWISPAN CHALLENGE
MAHON'S AMUSEMENTS
OVER 100 TRADE EXHIBITS
ENTERTAINMENT GALORE!**



ENTRY \$15 ADULTS - 14 & UNDER FREE



HOME INDUSTRIES

This year's show brings an entirely new section that can give you a truly hands on experience and even win your prizes! The Home Industries section gives those young and young at heart the opportunity to decorate a gumboot or even create an Aquajar. You might like to try making a vege creation too and there's even the chance to get creative with Lego!

With classes for preschoolers to 13 years for the kids and classes for the adults, you're in to win some great prizes and even some prize money!

